



TRY Group Packaging, LLC

Contact: Terry Youngs  
Phone: 503-799-8157  
Fax: 503-649-6946  
Website: [www.trygrouppackaging.com](http://www.trygrouppackaging.com)  
Email: [tyoungs@comcast.net](mailto:tyoungs@comcast.net)

## 50 lb. Airline Approved Shipping Box

### Product Specifications

Box Size: Inside Dimensions  
Cubic Feet  
Box Material  
Liner  
Boxes per pallet  
Set Up Box

### Product Comparisons

#### 50 lb. Cold Fold Box

31.50" x 11.25" x 9"  
1.85  
Non-Wax - Recyclable  
3/16" foil/bubble  
160 - 1 pallet  
2" or 3" tape

#### 50 lb. Wax Box

28.75" x 14.50" x 7.75"  
1.86  
Wax - Non Recyclable  
None  
260 - 2 pallets required  
Staples

### 6 EASY STEPS TO SETTING UP YOUR COLD FOLD BOX



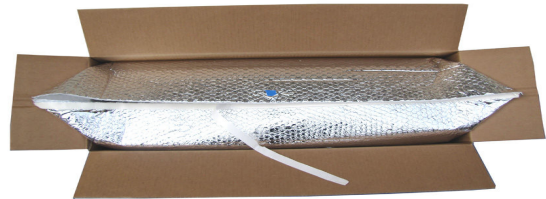
1> Open Box



2> tape bottom of Box



3> Place your product inside the foil bag



4> Remove double sided tape and secure bag



5> Fold in outer foil corners



6> Tape top of box - your done!